

Escuela Nueva

2013 Montopolis Drive

GNDC is partnering with Escuela Montessori de Montopolis, a nonprofit pre-school in Montopolis, to expand the pre-school and increase affordable housing opportunities in the Montopolis neighborhood. Escuela Montessori has 2 acres of land where GNDC will develop a new “state of the art” campus for the preschool students while creating 93 units of affordable, family-oriented housing, with 14 units dedicated to seniors. The project, “Escuela Nueva” will double the number of children currently served by the pre-k. The campus will integrate the pre-k, family housing, and senior housing within a green, energy-efficient, learning-focused development designed to increase social interaction, outdoor engagement, and intergenerational experiences, while enhancing the educational opportunities in the neighborhood.

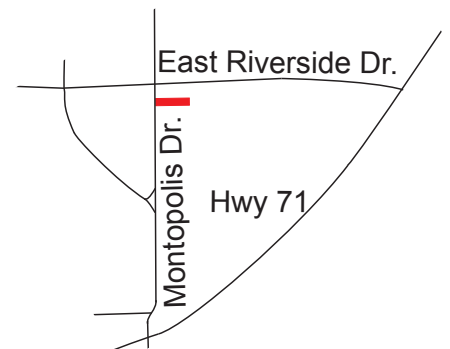


For more Information
contact:

Rachel Stone

512-479-6275 ext.5
rachel@guadalupendc.org

Land Owner: Escuela Montessori de Montopolis
Building Owner: GNDC
Architect: Hatch + Ulland Owen



Renderings provided by Architect: Hatch + Ulland Owen

Affordability Ranges

Unit Type	App. Household Income Range*	App. Monthly Rent Range**	App. # of units
1 Bed	\$13,500-\$34,200	\$350-\$900	14
2 Bed	\$18,000-\$46,860	\$450-\$1,000	51
3 Bed	\$25,000-\$58,560	\$625-\$1,460	28

* Based on 2020 HUD limits provided by US Department of Housing and Urban Development

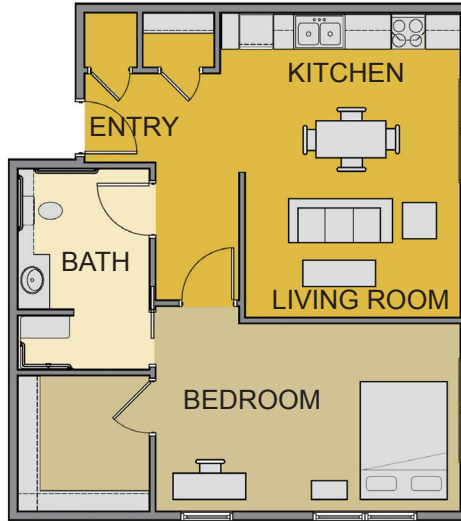
** Prices depend on a variety of factors at time of lease.

Project Timeline

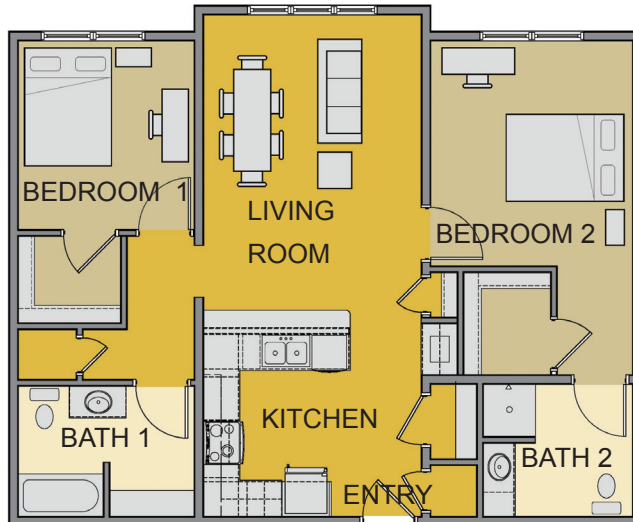


Escuela Nueva Unit Floor Plans

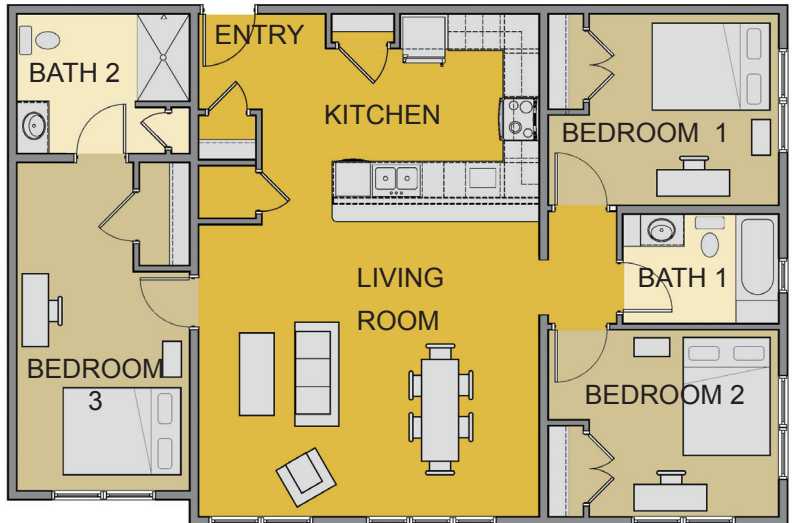
1 Bed + 1 Bath Elder Housing Unit 762 Sq Ft



2 Bed + 2 Bath Residential Unit 1,068 Sq Ft



3 Bed + 2 Bath Residential Unit 1,342 Sq Ft



Site Plan

